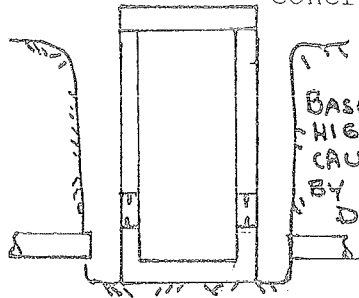


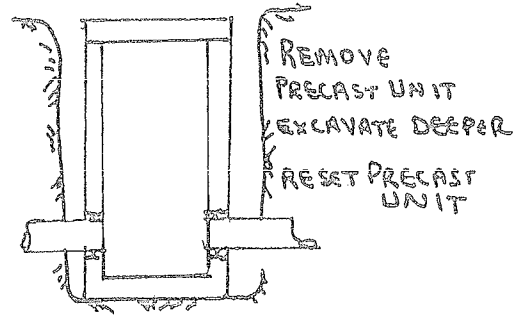
GARY K. MUNKELT, PE

B. If the base was placed at a higher elevation, the precast units need to be removed and excavation made deeper before reinstalling the precast concrete base.



BASE IS HIGHER THAN CALLED FOR BY CONTRACT DWGS.

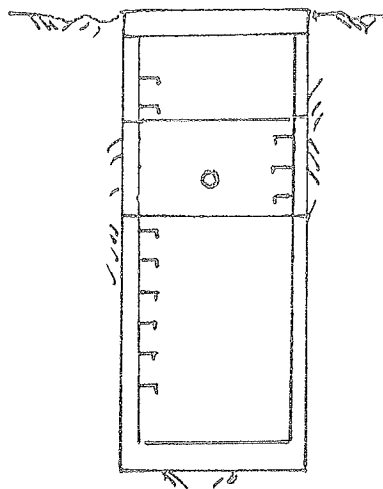
PROBLEM



REMOVE PRECAST UNIT
EXCAVATE DEEPER
RESET PRECAST UNIT

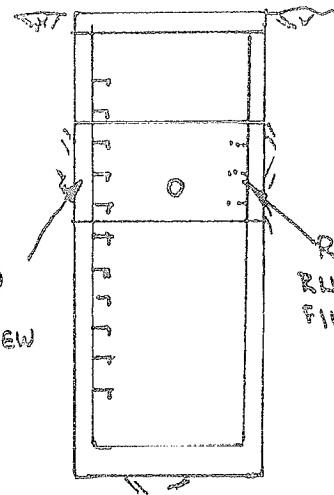
SOLUTION

III. Rungs are installed to provide access to the inside of a manhole. They need to be installed under the manhole cover or hatch. Care must be taken during installation to make rungs line up from section to section. When rungs are not in line, new holes need to be drilled, new rungs installed, and old rungs removed.



RUNGS NOT IN LINE

PROBLEM



DRILL NEW HOLES
INSTALL NEW RUNGS

REMOVE RUNGS AND FILL HOLES

SOLUTION